



RECP #: 752620
 RECORDED 5/8/2019 AT 1:09 PM BK# 2620 PG# 1662
 Debra K. Lee, CLERK OF LARAMIE COUNTY, WY PAGE 1 OF 1

STATE OF WYOMING CORNER RECORD

(In compliance with the CORNER PERPETUATION AND FILING ACT, Wyoming Statutes, 1997 Section 33-29-140, et. seq., and the Rules and Regulations of the Board of Registrations for Professional Engineers and Professional Land Surveyors)

NORTHWEST CORNER SECTION 6, T. 18 N., R. 61 W., 6TH P.M., LARAMIE COUNTY, WYOMING

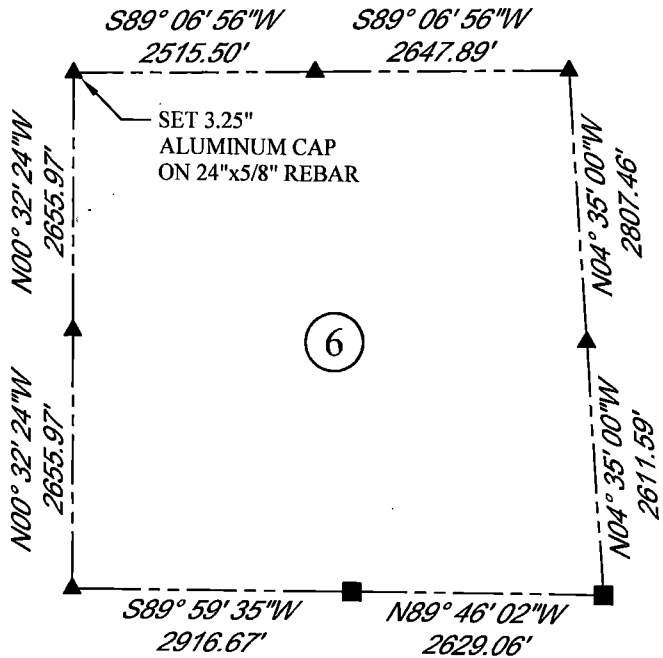
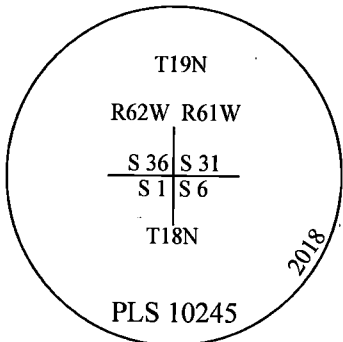
GLO: SET A SANDSTONE 24X14X8, 18IN DEEP, WITH 6 MARKS ON EACH OF ITS 4 EDGES. SET TO THE CARDINAL POINTS AND RAISED A MOUND OF STONES AROUND IT FOR CORNER TO TOWNSHIPS 18 AND 19 NORTH, RANGES 61 AND 62 WEST.

FOUND: NOTHING. SET ALUMINUM CAP AT PROPORTIONATE (DOUBLE) DISTANCE.



SCALE: NONE
 NORTH DETERMINED BY
 G.P.S OBSERVATIONS

SET 3.25" ALUMINUM CAP ON #5 REBAR, AT SURFACE, STAMPED AS SHOWN. SET 2 MAG NAILS IN 2 FENCE POSTS APPROXIMATELY 13' NORTHEASTERLY AND 18' NORTHWESTERLY.



LEGEND:

- FOUND BLM CAP
- ⊕ FOUND USFS CAP
- FOUND STONE
- ◻ FOUND PRIVATE MONUMENT
- ◆ CALCULATED POSITION
- ▲ SET MONUMENT (LS10245)
- SECTION LINE

DATE OF FIELD WORK: 9/20/2018 OFFICE REFERENCE: MERIDEN

CROSS INDEX DIAGRAM

	2	3	4	5	6	7	8	9	10	11	12	13	14	15	16	17	18	19	20	21	22	23	24	25	
A																									
B																									
C	6																								
D																									
E																									
F																									
G	7																								
H																									
J																									
K																									
L	18																								
M																									
N																									
O																									
P	19																								
Q																									
R																									
S																									
T	30																								
U																									
V																									
W																									
X	31																								
Y																									
Z																									
	1	2	3	4	5	6	7	8	9	10	11	12	13	14	15	16	17	18	19	20	21	22	23	24	25

WOOD
 2615 AVIATION DRIVE
 SHERIDAN, WY 82801
 PH: 307-675-6400



THIS CORNER RECORD WAS
 PREPARED BY ME OR UNDER
 MY DIRECTION AND
 SUPERVISION,
 SEAL AND SIGNATURE

